

*"Raising  
the Standards in  
Demolition"*



**CJ** CHARLTON  
GROUP LTD

# Raising the Standards in Demolition

---

We are based in Surrey and we operate throughout the South of England, providing a professional, expert and reliable service to clients.

Our client portfolio includes many of the construction industry's leading developers, main contractors and associated professionals.

Each project is managed by our highly trained team who strive to complete projects safely, on time and on budget.

Prior to any works commencing, careful planning and fully intrusive surveys are carried out to ensure safety, timescales, environmental and any restrictions are resolved prior to starting the job.

## The Senior Team



*Chris Charlton*

### DIRECTOR

Chris is IOSH qualified with over 15 years demolition experience working on numerous large and technically challenging projects. Chris has a keen eye for attention to detail and great organisation skills, he's always on hand to meet client's exacting demands.

e/ c.charlton@cjcharltongroup.co.uk  
w/ www.cjcharltongroup.co.uk



*Daniel Thompson*

### DIRECTOR

Daniel has worked on some of the largest and most prestigious demolition projects in the UK over the last 20 years and has a wealth of experience and industry knowledge. He has great communication skills and is always on hand to meet your on-site requirements.

d.thompson@cjcharltongroup.co.uk  
www.cjcharltongroup.co.uk



*Avi Goldberg*

### MANAGING PARTNER

Avi brings a complimentary skillset to the management team alongside a wealth of business experience. Operational expertise from different industries which compliment and diversify the service we provide to our clients.

a.goldberg@cjcharltongroup.co.uk  
www.cjcharltongroup.co.uk



*Will Bryan*

### PROJECT MANAGER

William has over a decade of experience in the construction industry with a range of projects in a wide geographical area. William's proactive approach to working with stakeholders to deliver demolition projects from inception to completion is fundamental to project success.

w.bryan@cjcharltongroup.co.uk  
www.cjcharltongroup.co.uk



“  
CJ Charlton Group  
approaches each  
project with precision  
and careful planning  
”



# Key Services in Demolition

---

**We can provide a range of demolition packages tailored to your needs acting as Principal Contractor or on a Sub Contractor basis.**

- ▣ Demolition
- ▣ Site Clearance
- ▣ Non-licensed asbestos removal
- ▣ Strip outs
- ▣ Residential demolition
- ▣ Industrial demolition
- ▣ Public sector demolition
- ▣ Commercial demolition

For each project we prepare and submit an array of documents, which include: Fully detailed site-specific Method Statements, Demolition Phase Plans & Risk Assessments.

- ✓ We take into consideration the surrounding environment
- ✓ We respect neighbouring residents and general public
- ✓ We dispose and recycle all materials correctly
- ✓ We hold relevant health and safety insurances and certificates to ensure peace of mind
- ✓ **We aim to recycle 95% of the waste we collect**





# Industrial and Commercial Strip Out

---

**Preparing an existing structure that is suitable for refurbishment is a specialised area of demolition.**

Stripping out is an area of our operations that can vary greatly; from taking out surplus soft furnishings and decorations, through to the complete internal demolition and removal of all internal walls and floors; leaving only the outer walls and roof.

If you are considering a site refurbishment, then CJ Charlton Group Ltd can offer a complete service to cover stripping out, non-structural and structural demolition together with the removal and disposal of asbestos or similar hazardous materials.

**Our strip out services include demolition and dismantling of the following:**

- ▣ Sanitary ware
- ▣ Air conditioning
- ▣ Carpets and floor coverings
- ▣ Ceilings and partitions
- ▣ Shelving and racking
- ▣ Non-structural walls
- ▣ Non-licensed asbestos removal
- ▣ Mezzanine floors

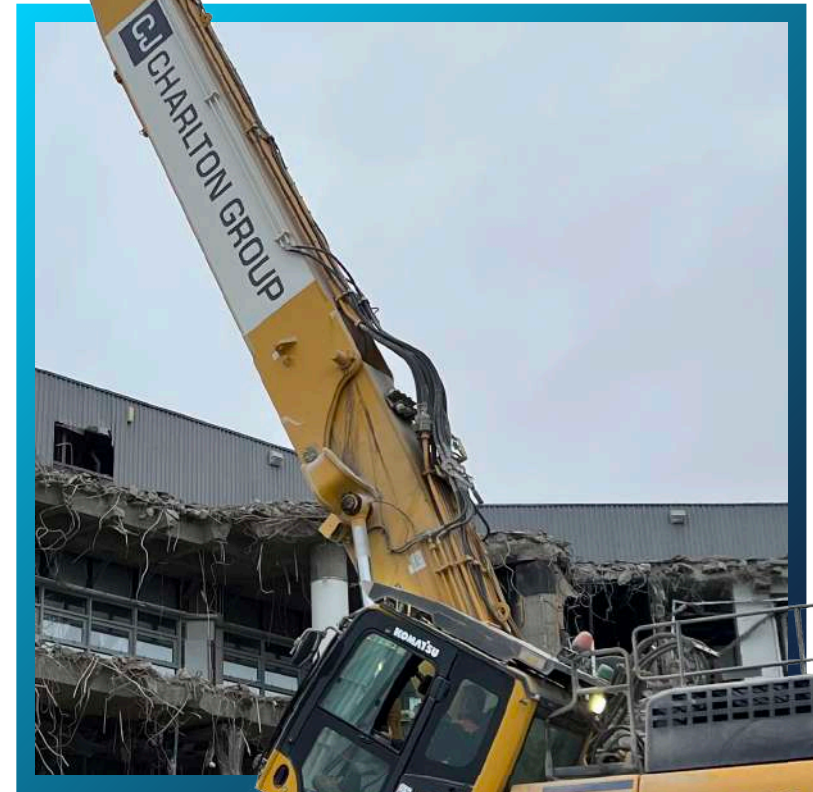


# High Reach Demolition Specialists

---

**Our Demolition portfolio consists of multiple high-rise and multi-storey developments over and above the reach of standard demolition excavators.**

Within our equipment fleet, we are armed with high-reach excavators that can work up to heights of 32 metres with attachments up to 3 tonnes; including crackers, pulverisers, metal cutting shears.





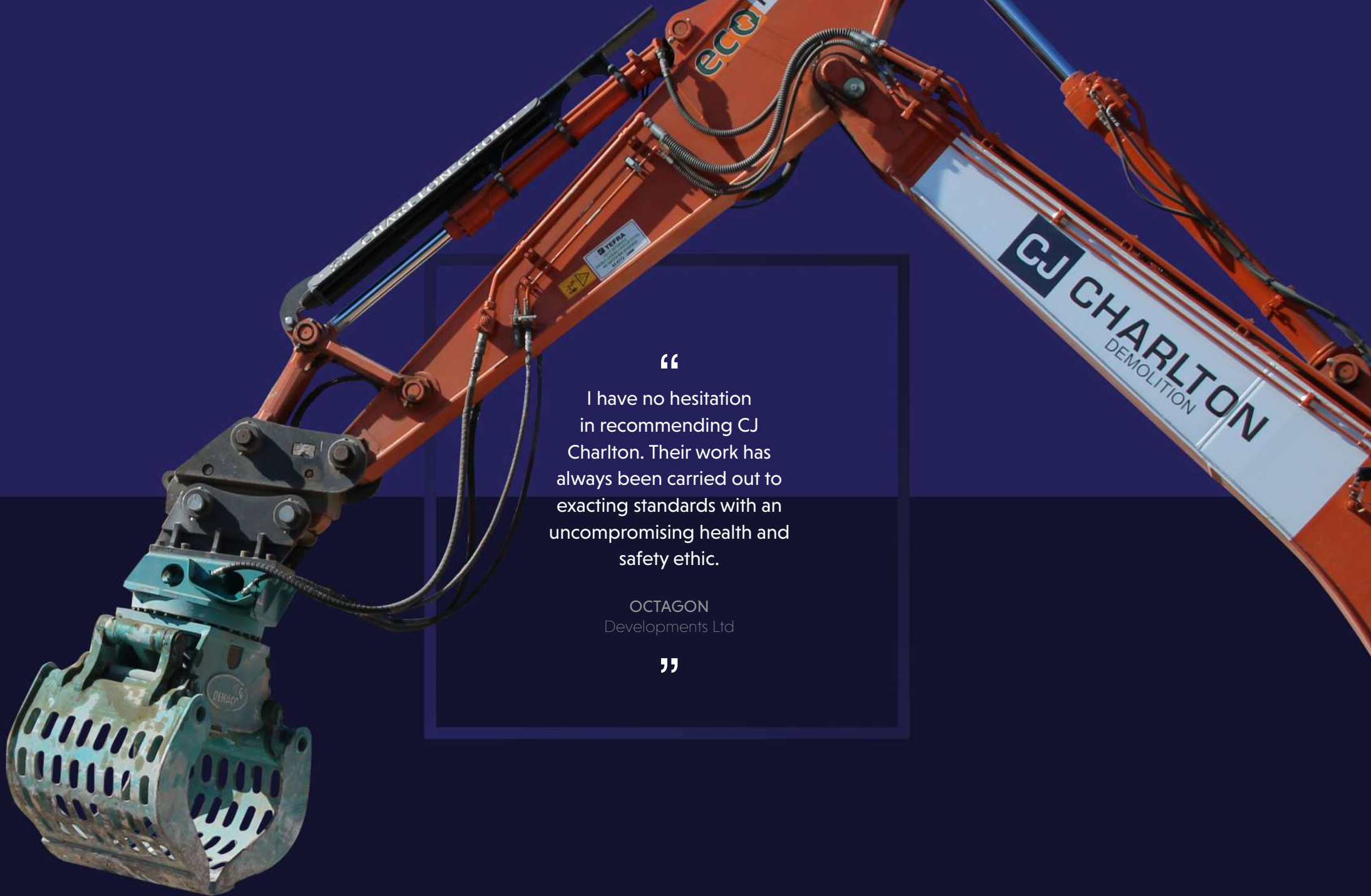
# Industrial Demolition Services

---

CJ Charlton Group have the knowledge and expertise in decommissioning and demolition services to property developers in city centre, residential and business park environments.

These Projects often involve working under controlled conditions in a sensitive environment close to local residents and neighbouring properties.





“

I have no hesitation  
in recommending CJ  
Charlton. Their work has  
always been carried out to  
exacting standards with an  
uncompromising health and  
safety ethic.

OCTAGON  
Developments Ltd

”



# Other Services

The CJ Charlton Group can offer additional services such as:

- ▣ Asbestos survey and removal
- ▣ Remediation works
- ▣ Japanese knotweed removal
- ▣ Emergency response demolition
- ▣ Site fencing and hoarding
- ▣ Concrete crushing and screening
- ▣ Piling matt and excavation
- ▣ Tree Protection



“

I have worked with CJ Charlton group on numerous occasions and would have no problem recommending them to anyone, as they have always been nothing but professional, timely, tidy and overall excellent at what they do.

I can't see why anyone would use anyone else. I look forward to working with them on my next project very soon.

LOFTHOUSE RESIDENCES  
Developments

”



“

We aim to achieve the highest standards  
in sustainability, health, safety and the  
welfare of our staff and clients.

”



# Health & Safety is our priority

We are constantly investing in staff training and regularly attend demolition-specific courses at the NDTG to achieve the highest standards in all matters relating to health, safety and welfare of our staff and clients. We are certified members of NFDC, as such, we have to complete regular onsite audits to maintain compliance.

✓ Work Safe   ✓ Keep Safe   ✓ Home Safe

Our staff are qualified and competent to carry out a wide range of tasks and hold the following qualifications:

- ▣ CPCS
- ▣ CDDO
- ▣ SMSTS
- ▣ PASMA
- ▣ IPAF
- ▣ First Aid
- ▣ CAT B Non-Licensed Asbestos Removal

## Our Accreditations



# Sustainability

---

**We make every effort to ensure that we are acting in an environmentally responsible and sustainably conscious way in every aspect of our projects and operations.**

We recognise the importance of our role in the enabling industry to reduce our impact on the environment both locally and globally.

We have identified and implemented numerous sustainable initiatives that have helped us reduce our carbon footprint, improve our waste management and to source locally where possible.

## HVO fuel

Non-toxic, biodegradable and with a high-burn rate, using HVO fuel results in a 90% reduction in CO<sub>2</sub>, 30% reduction in fine particles and overall reduction in NO<sub>x</sub>.





## Case Studies

Raising the  
Standards in  
Demolition

DEMOLITION | DISMANTLING | STRIP OUT



We have the  
**experience**,  
**safety record** and  
the **expertise** to  
handle any  
demolition  
project

DEMOLITION | DISMANTLING | STRIP OUT





# Colmore Gate

**Development:**

**Client:** Ashtrom Property UK

**Location:** Birmingham

**Duration:** 12 weeks

**Overall recycle:** 98%



## CASE STUDY

### Development

## Colmore Gate

Strip out, 10 office floors and 4 double shop floor units. Working with the tenants and building users in a live environment to minimise disruption.

### Full package comprising of

- Carry out pre demolition surveys
- Application of Section 81
- Risk assessment
- Planning, including 3d phased method statements
- To carry out full soft strip



### Sustainability statistics

- 100% of wood recycled
- 80% of construction & demolition waste (due to fridge panels being non-recyclable)
- 100% 110 tonne, metal
- 80% total all materials recycled

### Key achievements

- Working safely at height
- Working and liaising with local residence to avoid disruption
- Safely and securely removing contamination
- Detailed Traffic management plan put into place to minimize disruption to local infrastructure
- Local authority
- Deadline requirement
- Working under Covid 19 restrictions to protect the safety of visitors and Charlton group staff



**Development:**

**Client:**

**Location:**

**Duration:**

# Addlestone High Street

O&D Construction

Addlestone Surrey

6 weeks

(Completed 7 days early)

**Overall recycle:**

97%





## CASE STUDY

### Development

## Addlestone High Street

Six former retail units with accommodation, including two houses. Specialist skills required for a technical cut away from neighbouring property.

### Full package comprising of

- Carry out pre demolition surveys
- Application of Section 81
- Risk assessment
- Planning, including 3d phased method statements
- To carry out full soft strip
- Full scaffolding
- Full demolition
- Crashing material on site
- Pile mat installation
- Reduce level excavation
- Cut & Carve
- Asbestos removal



© Copyright 2023. CJ Charlton Group.



### Sustainability statistics

- 100% of wood recycled
- 97% of construction & demolition waste
- 100% 1,500 tonne crushed 6F5 material – this was used on site for piling mat construction
- 100% 14 tonne, metal
- 97% total all materials recycled

### Key achievements

- Working and liaising with local residence to avoid disruption
- Detailed Traffic management plan put into place to minimize disruption to local infrastructure
- Local authority
- Deadline requirement
- Working under Covid 19 restrictions to protect the safety of visitors and Charlton group staff



# RBS Main Federal Reserve

Development:

Location:

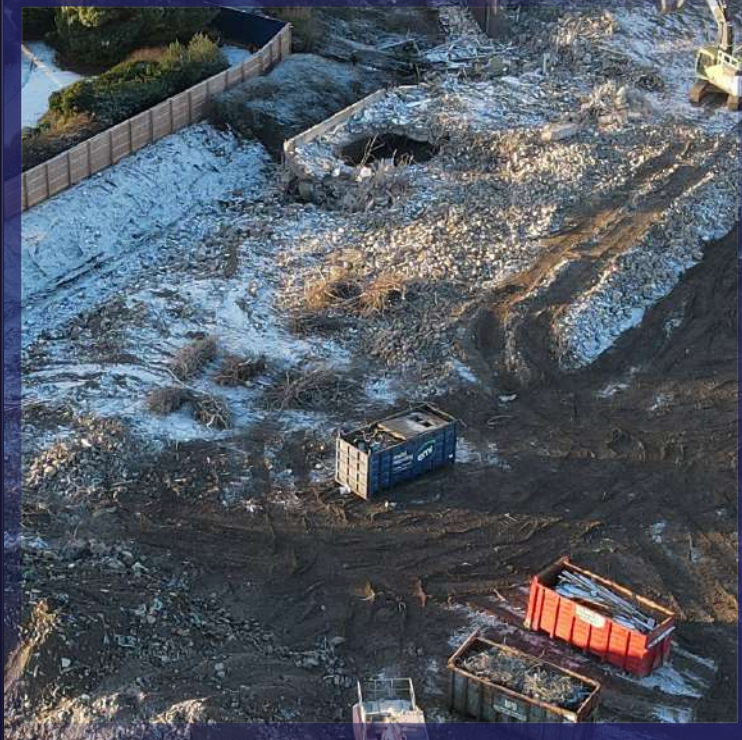
Edinburgh

Duration:

12 months

Overall recycle:

98%





## CASE STUDY

### Development

## RBS Main Federal Reserve

Full demolition, recycle and earthworks on former RBS Federal Reserve building, set on 13 acre site with 10,000 sq m building footprint. It was built in 1994 and contained a safe with 10 tonne doors with 1m thick walls.

### Full package comprising of

- Carry out pre demolition surveys
- Application of Section 81
- Risk assessment
- Planning, including 3d phased method statements
- To carry out full soft strip
- Full demolition
- Crushing material on site
- Pile mat installation
- Reduce level excavation
- Asbestos removal and contaminated ground remediation



### Sustainability statistics

- 100% of wood recycled
- 99% of construction & demolition waste
- 100% 100,000 tonne crushed 6F5 material – this was used on site for piling mat construction
- 100% metal
- 99% total all materials recycled

### Key achievements

- 100,000 tonnes of material processed through on-site crushing plant and reused within the project.
- Removal of Federal Reserve Safe with 1 metre thick walls and 10 tonne doors
- High Reach demolition
- Detailed Traffic management plan put into place to minimize disruption to local infrastructure
- Local authority
- Deadline requirement



**Development:**

**Client:**

**Location:**

**Duration:**

# Ryecroft

Lofthouse Residences

Surrey

16 weeks

(on deadline)

**Overall recycle:**

97%





## CASE STUDY

### Development

## Ryecroft

Full demolition, recycle and earthworks on former equestrian centre.

### Full package comprising of

- ▣ Carry out pre demolition surveys
- ▣ Application of Section 81
- ▣ Risk assessment
- ▣ Planning, including 3d phased method statements
- ▣ To carry out full soft strip
- ▣ Full demolition
- ▣ Crushing material on site
- ▣ Pile mat installation
- ▣ Reduce level excavation
- ▣ Asbestos removal and contaminated ground remediation



### Sustainability statistics

- ▣ 100% of wood recycled
- ▣ 99% of construction & demolition waste
- ▣ 100% 900 tonne crushed 6F5 material – this was used on site for piling mat construction
- ▣ 100% 52 tonne, metal
- ▣ 99% total all materials recycled

### Key achievements

- ▣ Working with high water table (flood plain)  
Working and liaising with local residence to avoid disruption
- ▣ Detailed Traffic management plan put into place to minimize disruption to local infrastructure
- ▣ Local authority
- ▣ Deadline requirement
- ▣ Working under Covid 19 restrictions to protect the safety of visitors and Charlton group staff



# Farnborough Technical College

**Development:**

**Client:** Concept

**Location:** Farnborough, Hampshire

**Duration:** 11 weeks  
(on deadline)

**Overall recycle:** 97%





## CASE STUDY

### Development

## Farnborough Technical College

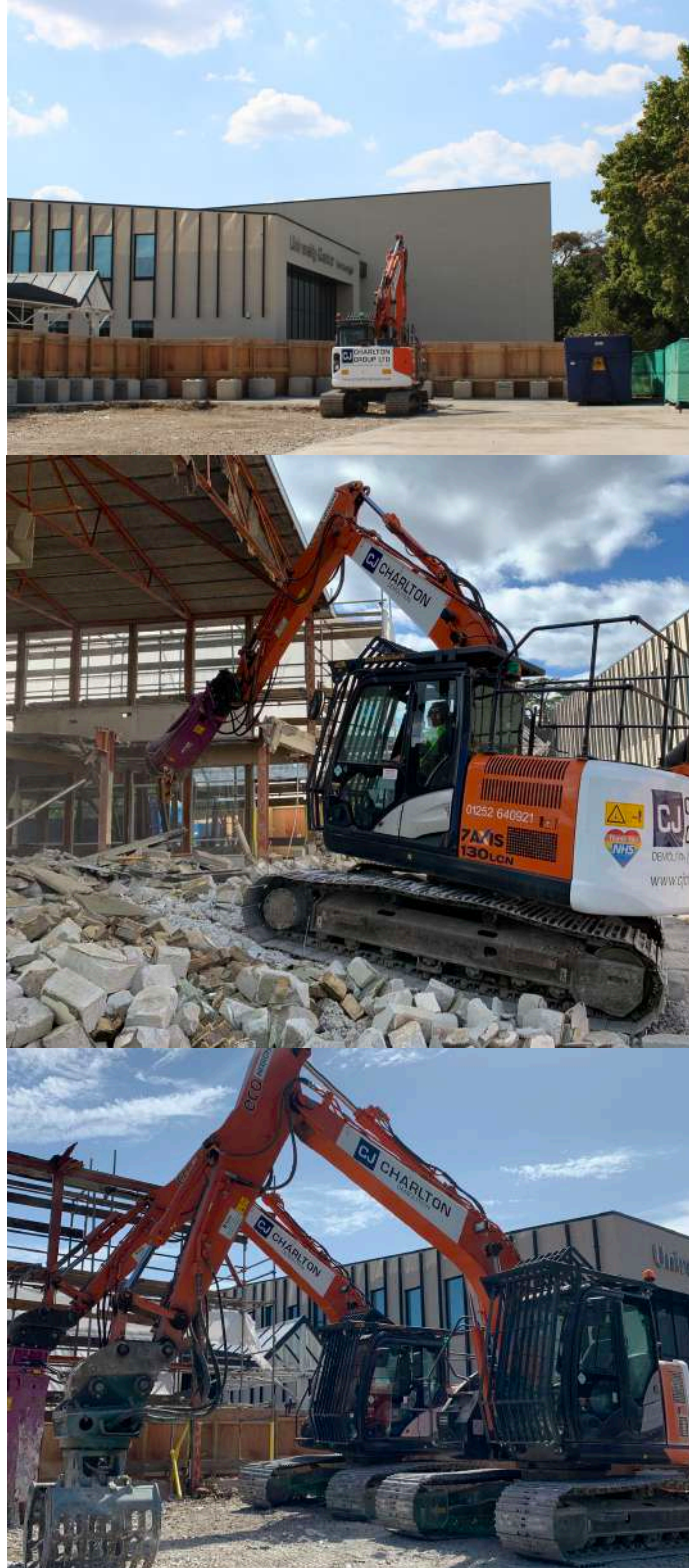
Full demolition and recycling of former teaching block

### Full package comprising of

- ▣ Carry out pre demolition surveys
- ▣ Application of Section 81
- ▣ Risk assessment
- ▣ Planning, including 3d phased method statements
- ▣ To carry out full soft strip
- ▣ Full scaffolding
- ▣ Full demolition
- ▣ Reduce level excavation
- ▣ Cut & Carve
- ▣ Asbestos removal



© Copyright 2023. CJ Charlton Group.



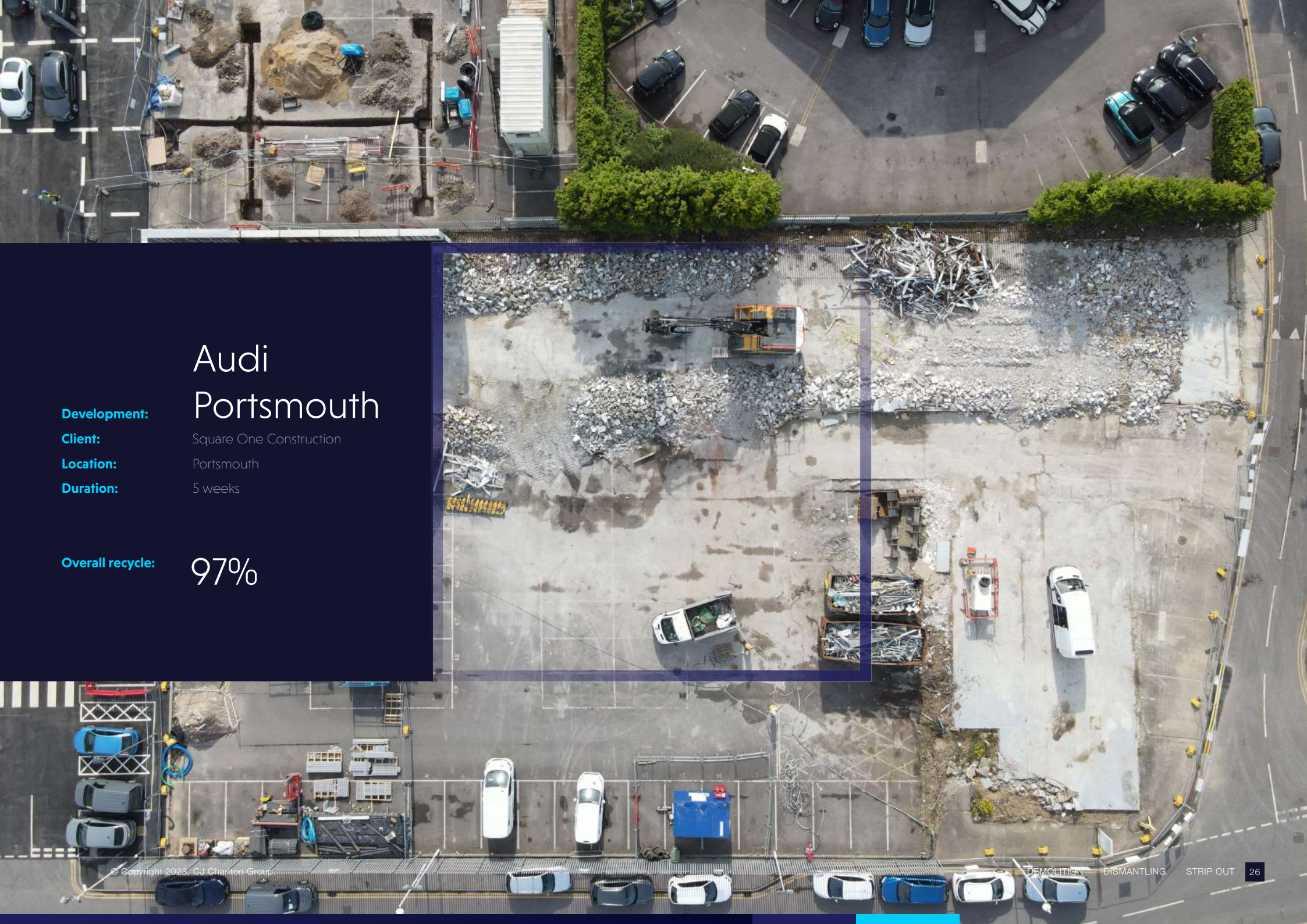
### Sustainability statistics

- ▣ 100% of wood recycled
- ▣ 96% of construction & demolition waste
- ▣ 100% 1,500 tonne 6F5 material
- ▣ 100% 75 tonne, metal
- ▣ 96% total all materials recycled

### Key achievements

- ▣ Working and liaising with local residence to avoid disruption, due to high volume high street location
- ▣ Detailed Traffic management plan put into place to minimize disruption to local infrastructure
- ▣ Local authority
- ▣ Deadline requirement
- ▣ Working under Covid 19 restrictions to protect the safety of visitors and Charlton group staff





# Audi Portsmouth

**Development:**

**Client:**

Square One Construction

**Location:**

Portsmouth

**Duration:**

5 weeks

**Overall recycle:**

97%



## CASE STUDY

### Development

## Audi Portsmouth

Full demolition, recycle and earthworks  
on former Audi Building.

### Full package comprising of

- ▣ Carry out pre demolition surveys
- ▣ Application of Section 81
- ▣ Risk assessment
- ▣ Planning, including 3d phased method statements
- ▣ To carry out full soft strip
- ▣ Full demolition
- ▣ Crushing material on site
- ▣ Pile mat installation
- ▣ Reduce level excavation
- ▣ Asbestos removal and contaminated ground remediation



### Sustainability statistics

- ▣ 100% of wood recycled
- ▣ 99% of construction & demolition waste
- ▣ 100% 900 tonne crushed 6F5 material – this was used on site for piling mat construction
- ▣ 100% 52 tonne, metal
- ▣ 99% total all materials recycled

### Key achievements

- ▣ Detailed Traffic management plan put into place to minimize disruption to local infrastructure
- ▣ Local authority
- ▣ Deadline requirement
- ▣ Working under Covid 19 restrictions to protect the safety of visitors and Charlton group staff



**CJ** CHARLTON  
GROUP LTD

## Raising the Standards in Demolition

Contact us today for more  
information and a site survey

- [www.cjcharltongroup.co.uk](http://www.cjcharltongroup.co.uk)
- 01252 761031
- [enquiries@cjcharltongroup.co.uk](mailto:enquiries@cjcharltongroup.co.uk)

- f CJCharltongroupLtd
- t cjcharltongroup
- @ cjcharltongroup
- in cjcharltongroupLtd